

Creswell Clubhouse

After School Program

Open Monday through Friday 2:00-6:00 PM

Monthly Price and Hours:

5 days per week -\$165

4 days per week -\$140

3 days per week -\$120

Monday/Wednesday OR Tuesday/Thursday -\$50

Summer Camp Program

Open Monday through Friday 7:30AM-6:00PM

Monthly Price and Hours:

Monday through Thursday, 1-6 PM -\$165

Extended Program

Monday-Friday 7:30 AM-6:00 PM -\$365

***Scholarships Always
Available!**



Improving reading and math skills through homework help and reading practice.

THANK YOU! Program Sponsors

Creslane Elementary

Creswell School District

Sanipac

Pacific Source

First Story

Creswell Masonic Lodge

Eugene Elks Club

Jerry Russell

Creslane
Elementary



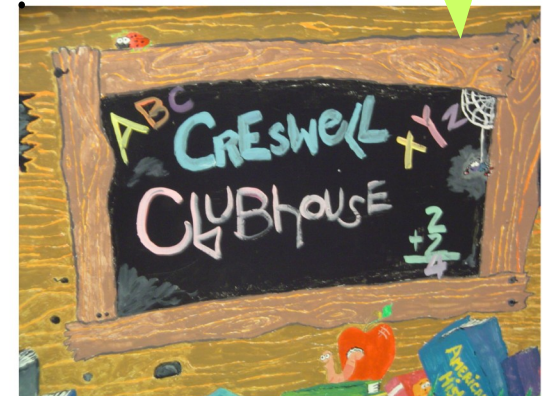
Home of the
Mustangs!



▶ **Creswell Clubhouse
Creslane Elementary
996 West A Street
Creswell, OR 97426
(541) 852-6034**

**Laura Rariden, MPA
Executive Director
at (541) 653-0699 or
lrariden@gmail.com**

Creslane
Elementary



After School and
Summer Programs

- Sports and Games
- Arts and Crafts
- Homework Help
- Computer Time
- Daily Reading
- Snack and Recess!

What is Creswell Clubhouse?

Creswell Clubhouse was designed to provide young people in Creswell with a safe and healthy place to practice reading skills, receive help with homework, utilize computer resources and participate in educationally enriching activities after school. The Clubhouse strives to build a stronger physical, intellectual and emotional support system for students while fostering responsible choice making.

Activities:

- Homework Club
- Sports and Gym Games
- Service Learning
- Computer Time
- Reading
- Arts and Crafts
- Field Trips
- Science
- Performance



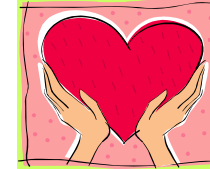
A Note from Our Executive Director

Here at Clubhouse we put families and children first. We strive to keep costs low while providing the highest quality service. Children at Clubhouse are given the opportunity to fill their out of school time with positive and rewarding programs and friendships. Our staff are dedicated and caring, spending time with children helping them to do homework, read, play and have FUN! We put education first, supplementing the school day with enriching activities. It is an honor and privilege to serve in such a great community with such wonderful families! :) Laura Rariden, ED



**HERE IS YOUR CHANCE TO
SUPPORT THE SUCCESS
OF YOUNG PEOPLE IN
CRESWELL!**

All donations are tax deductible.



**Creswell Clubhouse
Creslane Elementary
996 West A Street
Creswell, OR 97426**

I would like to donate:

- ◇ \$25 Clubhouse Supporter
- ◇ \$50 Supplies for a Club
- ◇ \$100 Stock our Prize Cabinet
- ◇ \$150 Scholarship Fund Support

I would like to be a program sponsor!

- ◇ \$300 Program sponsors business logo and/or name printed on all Clubhouse marketing materials.

Name: _____

Address: _____

Phone #: _____